



SOLUTION BRIEF

Azure Virtual Desktop

The best virtual Windows and Office experience, delivered on Azure.



Delivers the only multi-session Windows 10 experience.

Access the fully managed, always up to date, rich Windows user experience from any end-user device platform with your choice of virtualised OS. Client-like experience includes Cortana, Edge, desktop search, and Microsoft Store. You have complete access control for security and cost efficiencies.

Enable optimisations for Office 365 ProPlus.

Deliver the best Office 365 ProPlus experience in a multi-session environment to your users. New container technology enables fast load times and provides a performant experience for Outlook, OneDrive, Cortana, Search, and Teams. Create persistent and non-persistent environments. Virtualise entire desktop or select applications only.



Deploy and scale in minutes.

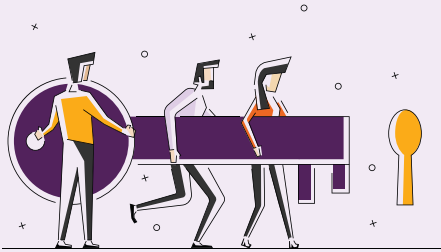
Manage users and security via a unified administrative interface in the Azure Portal. Use familiar tools like Rest API & PowerShell to customise setup, deployment, and UI. Dynamically scale virtual machines using depth-first or breadth-first load balancing. Benefit from the integrated security and management of Microsoft 365 and rich partner solutions.

Migrate your existing RDS and Windows Server desktop and apps to Azure

Bring existing Remote Desktop Services (RDS) and Windows Server desktops and apps to any computer. Reduce costs through unified management and deployment experience for Windows Server, Windows 10, and Windows 7 desktops and apps. Benefit from free Extended Security Updates for Windows Server 2008 and 2008 R2 desktops and apps.



Access to Azure Virtual Desktop



1. Azure Virtual Desktop is available to you at no additional cost if you have an eligible M365 license. Just pay for the Azure resources required.

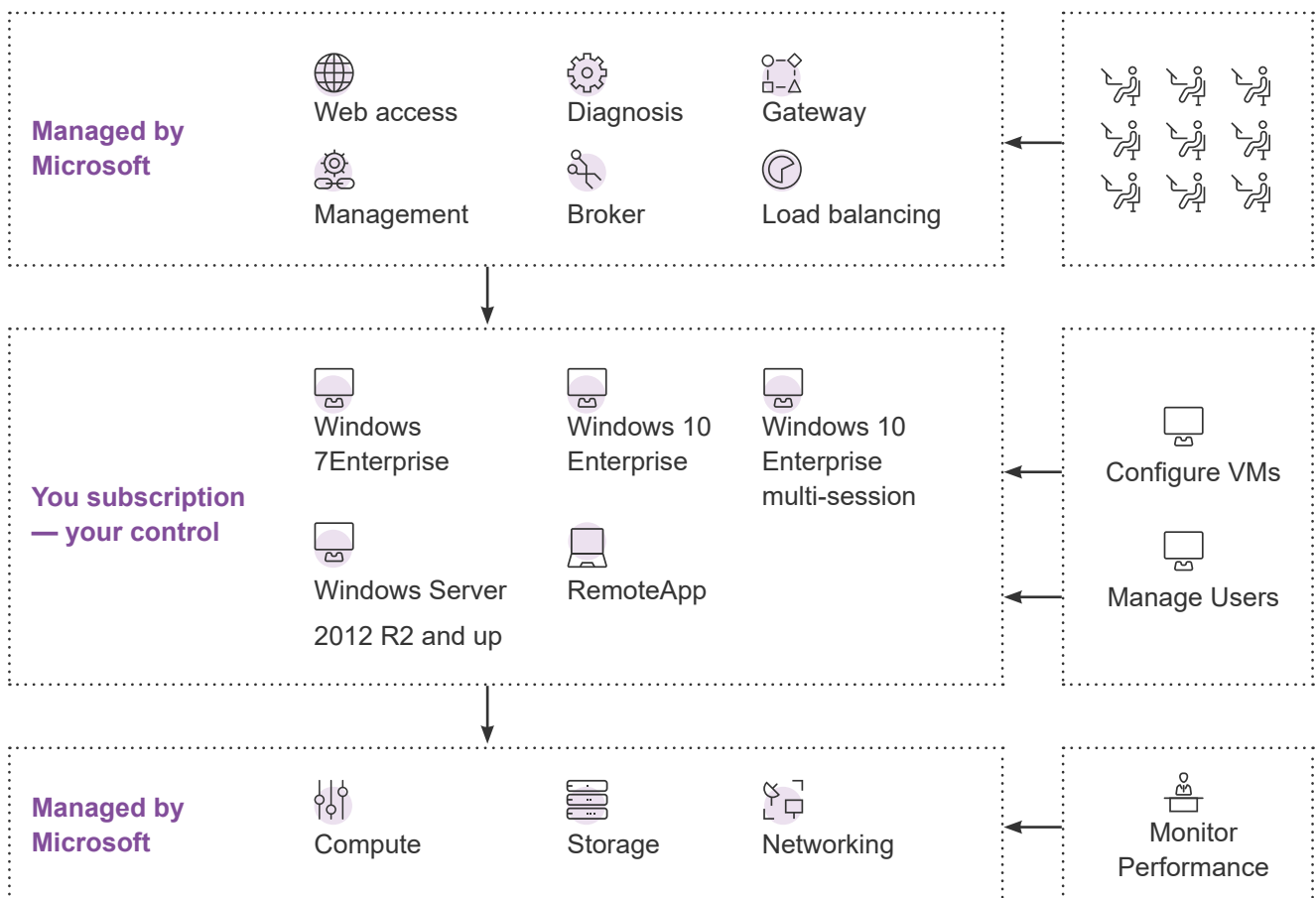
– To run Windows 10 multi-session, Windows 10, or Windows 7, you need one of the following:

- Microsoft 365 F1, E3, E5, A3, A5, Business.
- Windows 10 Enterprise E3, E5.
- Windows 10 Education A3, A5.
- Windows 10 VDA per user.

– To run Windows Server 2012 R2, 2016, 2019, you need: Remote Desktop Services (RDS) Client Access License (CAL) with active Software Assurance (SA).

2. Setup your Azure subscription.

Contact Professional Advantage to learn how to set up your Azure Virtual Desktop optimally.



Take this self-assessment to see if Azure Virtual Desktop is right for you:

- You need the ability to add users quickly and easily.
- You need to scale efficiently on demand.
- Your end-users need a seamless rich client experience with Outlook, Search, Cortana, OneDrive, and Teams.
- You need to manage different deployment types across different deployment planes.
- You need to bring Remote Desktop Services (RDS) to your users.
- You need to support both persistent and non-persistent environments.
- You need integrated security and management e.g. Microsoft 365, AAD.
- You need to run Windows 7 legacy applications post upcoming Win 7 EOL.
- You are in a regulated industry and need to meet strict compliance requirements.
- You need to reuse your existing hardware.
- You want your users to have a Windows 10 experience, not a server experience on their desktop environment.
- You want to reduce management and deployment costs for Windows Server.

[LEARN MORE](#)

Let's Talk.

1800 126 499

pa.com.au

enquiries@pa.com.au

About Professional Advantage

Professional Advantage is an international IT consulting and solutions company, with 30 years of experience in helping organisations achieve more by improving their business systems through industry leading software solutions. Originating in Australia, it is one of the country's most awarded solution providers. Our 250-strong global team covers three continents, and has successfully worked with over 1000 organisations.