



Job Cost

**Information When and Where
You Need It**



Microsoft
GOLD CERTIFIED
Partner



Microsoft Dynamics

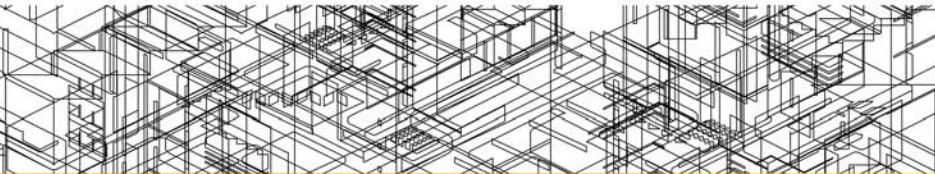
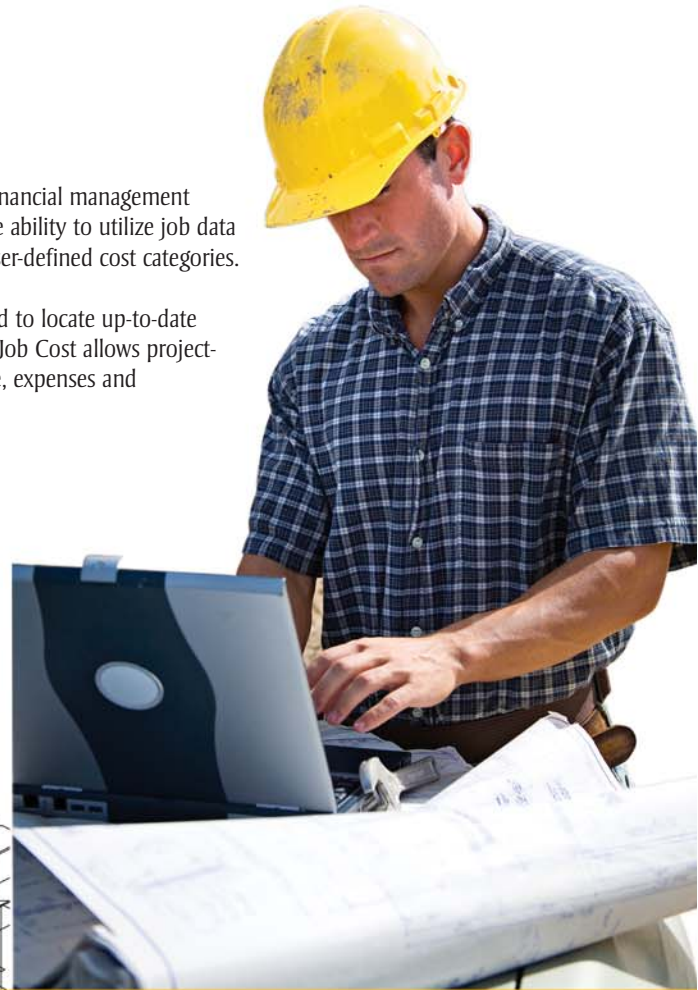
JOB COST

Job Cost integrates a complete project management solution with the superior financial management capabilities of Microsoft® Dynamics™ GP financials to give project managers the ability to utilize job data and proactively manage labor, materials, equipment, subcontractors and other user-defined cost categories.

Complex, time-consuming searches are an obstacle to project managers that need to locate up-to-date project information. Designed to rapidly adapt to changing business conditions, Job Cost allows project-based businesses to track actual and budget activity while easily tracking revenue, expenses and profitability.

Job Cost helps you effortlessly track:

- Project change orders
- Subcontracts
- Subcontract documents
- Forecasts
- Forecast revisions
- Committed purchase orders
- Fixed assets
- Percentage of complete revenue



Realize Greater Control and Flexibility in Billing

Type / Document Number	Date	Document Amount	Cash/Receipt
Customer ID		Contract Billed	Amount Remaining
INV 1210006	4/12/2007	\$32,223.90	\$0.00
WENNSDP1		\$31,080.00	\$3,223.90

Designed to control and manage unbilled receivables and create invoices, Job Cost delivers shortened billing cycles and improved cash flow. As a project progresses, charges flow into the billing system from various sources such as accounts payable, purchase orders, inventory and payroll modules.

Highlights:

- Single point data entry
- On-demand direct entry invoicing
- Multiple billing types supported (time and material, AIA, cost plus, cost plus NTE, fixed price, percentage complete and scheduled billings)
- Greater control of project billing through flexible billing rates, overhead allocation, mark-up rules and multiple billing methods
- Ability to print detailed job invoices in multiple currencies

Utilitize Current Information When Making Critical Decisions

Accurate, up-to-date information is critical for making profitable business decisions. System report writers included with Microsoft Dynamics GP, Microsoft SQL™ Server Reporting Services reports and Crystal Reports customization tools allow you to quickly create new reports or modify any of the hundreds of existing reports within Job Cost.

Regardless of project complexity, Job Cost keeps the focus on profitability by ensuring that your staff has access to accurate, up-to-date information. With options ranging from simple, user-defined lists to sophisticated custom-analysis tools, Job Cost will help you turn your data into knowledge. Additional built-in benefits include billing and accounts receivable, change-order management, contract administration, union payroll, budgeting and reporting.



Manage One Contract Across Multiple Divisions

Designed for organizations with multiple divisions working on a single contract, Project Level Billing allows you to create a single contract with multiple jobs and track project-level costs, billing and revenue over multiple divisions (e.g., electrical, HVAC and plumbing).

You can create a single invoice for all jobs within a project and post one accounts receivable transaction, effectively updating the appropriate revenue accounts based on the division assigned to each individual job. The integration to financials provides a top-to-bottom view of the project performance—from big picture to a snapshot of individual cost code activities within a job.



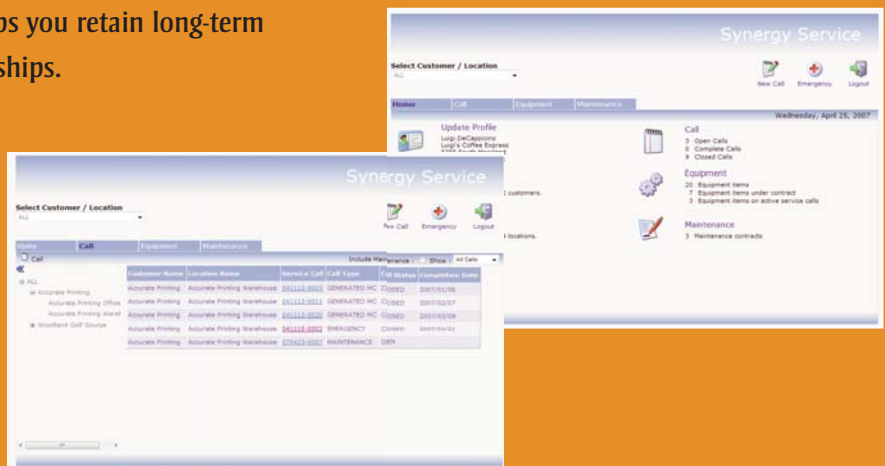
Provide Your Customers with 24/7 Account Access

Used in conjunction with WennSoft Service Management, WennSoft Customer Portal utilizes the latest ASP.NET technology to allow you to provide your customers with a secure interface where they can submit service calls and access their open calls, service call history, equipment and equipment service history, maintenance contracts, notes and document attachments.

This information is customizable, allowing you to control the data that you share with your customers. Giving your customers 24/7 access to the information in their accounts lets them control their service experience and helps you retain long-term relationships.

eTimeTrack

Employees working outside of the office can enter timesheet information over the Internet by utilizing eTimeTrack. An extension to the TimeTrack module, employees can charge time to jobs and service calls on a daily basis. Non-billable time or time not assigned to a job or service call can also be entered. eTimeTrack transactions are saved to TimeTrack and flow directly into TimeTrack batches.



Improve Project Management

Managing the documents, responses and workflow associated with a project can be daunting. The WennSoft Project Management Portal is designed to deliver organization, clarity and simplification to this process.

Leveraging SharePoint 2007, Microsoft Office 2007 and workflow technologies, the Project Management Portal allows you to easily track documents (submittals, RFIs, change orders, staff memos, meeting minutes, etc.), approvals and task assignments. Maintaining all project information in one central location eliminates time wasted searching for information and keeps key players up-to-date and focused, ensuring projects stay on track.

WennSoft Service Management

If your project-based organization includes service operations, the WennSoft Service Management Series can be leveraged in conjunction with Job Cost to deliver a complete solution to maximize profitability while enhancing customer service.

The foundation of the Service Management Series allows you to facilitate efficient:

- Service call capture and assignment
- Dispatch
- Resolution tracking
- Contract management
- Execution (utilizing the powerful WennSoft tasking engine)



WennSoft Equipment Management

If equipment management is part of your operation, the WennSoft Equipment Management Series has the scalability and flexibility necessary to maximize the effectiveness and profitability of your equipment operations.

The Equipment Management Series ties together equipment management, service management, resources and financials – everything you need to make better decisions, realize higher utilization and produce a better bottom line.

Streamline the Collection of Labor and Related Expenses

TimeTrack allows you to enter time information once for use by multiple modules including Payroll, Payables Management, Job Cost and General Ledger. You can capture, validate, track, review, approve and post labor, travel and employee expenses to various projects or service calls.

Users can enter service, job cost and unbillable payroll transactions for an employee, all from the same window. The default value can be set for specific fields, resulting in a faster billing cycle, better cash flow and quicker management reporting cycles. TimeTrack also allows you to monitor, analyze and approve labor costs before committing to pay. Additional functionality allows you to build an export file for outside payroll services.

Transaction Number	TRX Type / Cost Type	Job Number	Cost Code	Day of Week	Pay Code	Hours/Units	Cost	Transaction Description
1040	JOB COST	1001	00-1000-001	MONDAY	HOURL	5.00	\$102.00	
1041	SERVICE	041113-0019	7	MONDAY	HOURL	2.00	\$80.00	
1042	UNBILLED			MONDAY	HOURL	1.00	\$20.00	Cleaned up van!
1043	JOB COST	1001	00-4000-007	MONDAY	EXAT	1.00	\$5.75	Paid cash for pipe hangers

Instantly Access Up-to-date Project Information

The Project Manager's Advisor allows project managers to quickly access specific job information. Rapid access to information eliminates timely searches, creates greater efficiencies and allows you to make business decisions based on real-time information, improving control and the ultimate outcome of a job.

User-defined security settings allow you to control the information your staff can access and the actions they can take within a project (forecast revisions, change orders, etc.). Remote employees can access information and facilitate changes utilizing the Job Cost Portal, which effectively extends the application to the field via the Internet.



Manage Your Subcontractor Agreements More Efficiently

Effectively managing subcontractor agreements can be a daunting task and unexpected subcontractor costs can destroy margins and erode working capital. The Subcontractor module enables more effective management of subcontractor arrangements and tracks critical information including:

- Insurance
- Draw requests
- Retention requests
- Workers compensation expiration dates
- Certification expiration
- Change order status for inclusion in AIA billing
- Payment control when paid by customer (pay-when-paid)

Subcontractor Maintenance	
Job Number	123456789
Address	1234 E. Main Street
Vendor Contract Type	NTE
Contract Date	1/15/2007
Purchase Order #	
Retention %	10.00
Start Date	
Line Contract 1	Subst. Date
Line Contract 2	Retention Date
Line Contract 3	Approval Date
Line Contract 4	Disapproval Date
Line Contract 5	
Subcontractor Data	
Original Contract Amt	41,000.00
Change Orders	4,000.00
Approved Contract Amt	47,000.00
Actual Costs	17,500.00
Vendor Invoiced	17,500.00
Customer Unpaid	1,750.00
Retention Invoiced	
Total	15,750.00



Simplify Complex Jobs

Organization and tracking are critical elements when it comes to the execution of a job with a large number of vendors and subcontractors. The Advanced Subcontractor module helps you facilitate the tracking of contract and subcontract documents for multiple projects. Documents such as change orders, permits, proof of insurance, performance bonds and other contract-related information is easily accessible.

Advanced Subcontractor offers robust reports, plus payment and retention features that allow for the tracking of multiple insurance types across all jobs for a subcontractor. Additionally, printing and tracking of lien waivers is also incorporated into the module, leaving less chance for errors or oversights.

The Subcontractor Status window, a unique feature of the Advanced Subcontractor module, summarizes contract information for a specific subcontractor and acts as a central location for accessing additional data related to that subcontractor.



Easily Organize, Store and Share Documents

The Advanced Document Management module is a practical, affordable solution for organizing and sharing documents. Easily organize, view, print and share project information by simply drilling down on common sense, descriptive document names. The most current documents are organized and immediately available, eliminating last minute surprises and costly delays when preparing for reviews and project delivery.

The Advanced Document Management module allows users to store, retrieve and attach files in virtually any format, including:

- PDF files
- CAD drawings
- Photographs (GIF, JPEG, etc.)
- Scanned documents
- Microsoft Office® documents

Multicurrency Management

Multicurrency Management allows you to easily generate invoices in the currency your customers require, regardless of the different markets and currencies that need to be accommodated. Shortened billing cycles will reduce open accounts receivable, resulting in improved profitability.



WennSoft provides innovative business management solutions for public and private sector organizations focused on project management, field service and equipment/fleet management.

Core products – Job Cost, Service Management Series and Equipment Management Series – integrate with Microsoft Dynamics GP to deliver a unique solution to the vertical industries we serve. Our solutions complement and enhance existing process—improving efficiency, expediting reporting and creating cost savings for our customers.

WennSoft
P.O. Box 511187
5355 S. Moorland Rd.
New Berlin, WI 53151-1187
Tel: (262) 821-4100
Tel: (262) 317-3700 (sales)
Fax: (262) 821-3838
e-mail: sales@wennsoft.com



Microsoft
GOLD CERTIFIED
Partner

